



GEFÖRDERT VOM



Bundesministerium
für Bildung
und Forschung

CrEST Project Closing Event

Goal-based Strategy Exploration

Prof. Dr. Holger Schlingloff, Fraunhofer FOKUS / Humboldt-Universität

Online-Meeting, 16.10.2020

Problem Statement

- In collaborative systems there are goals of the group as well as goals of individual participants
 - Example car platooning: group goal is to save fuel,
individual goal is to reach a destination
 - Example transport robots: group goal is uninterrupted production,
individual goal is minimal wear and tear
- Individual goals may support group goals, contradict them, or be orthogonal
- Quality of the system depends on the degree of goal satisfaction
- Research question: how can goals be used as a basis in the model-based development of collaborating embedded systems?
 - Formal description of goals and goal hierarchies
 - Avoidance of goal conflicts, definition of optimal behavior
 - Derivation of strategies and code from the description of goals
 - Evaluation of systems with respect to the defined goals



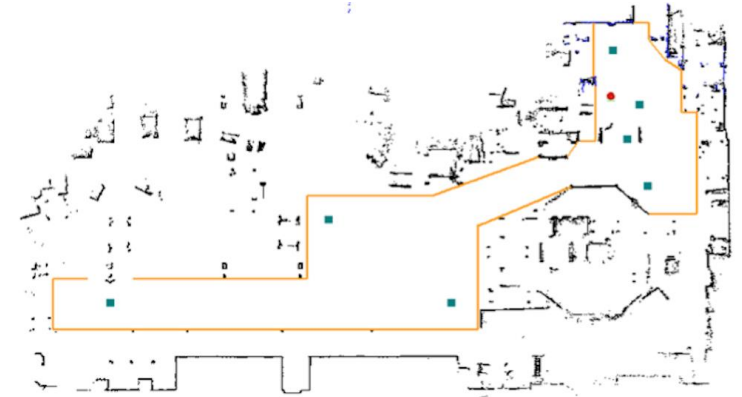
Use Case Transport Robots

- Driverless transport vehicles
 - Serving (loading and unloading) of production machines
 - Carrying loads of 20-200kg
 - Fleets of 5-20 robots
- Historical development
 - First generation: rails or following a line
 - Second generation: on dedicated roads
 - Third generation: moving freely with humans
- Vision for the future: serving of machines done by robots, humans only for supervision only
 - Presentation on marketplace EC3



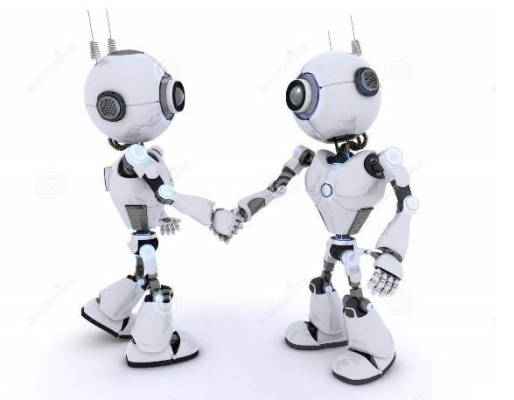
Use Case Challenges

- Localization and self localization
 - Laser scanner for safety and localization
 - Pre-mapping of factory environment
 - Maximum likelihood pattern matching
- Route planning
 - Dijkstra shortest path algorithm for overall route
 - Dynamic window algorithm for collision avoidance
- Job scheduling
 - Robot hardware may have failures, roads may be blocked etc.
 - Wireless communication may be distorted
 - Server as a single point of failure may break down



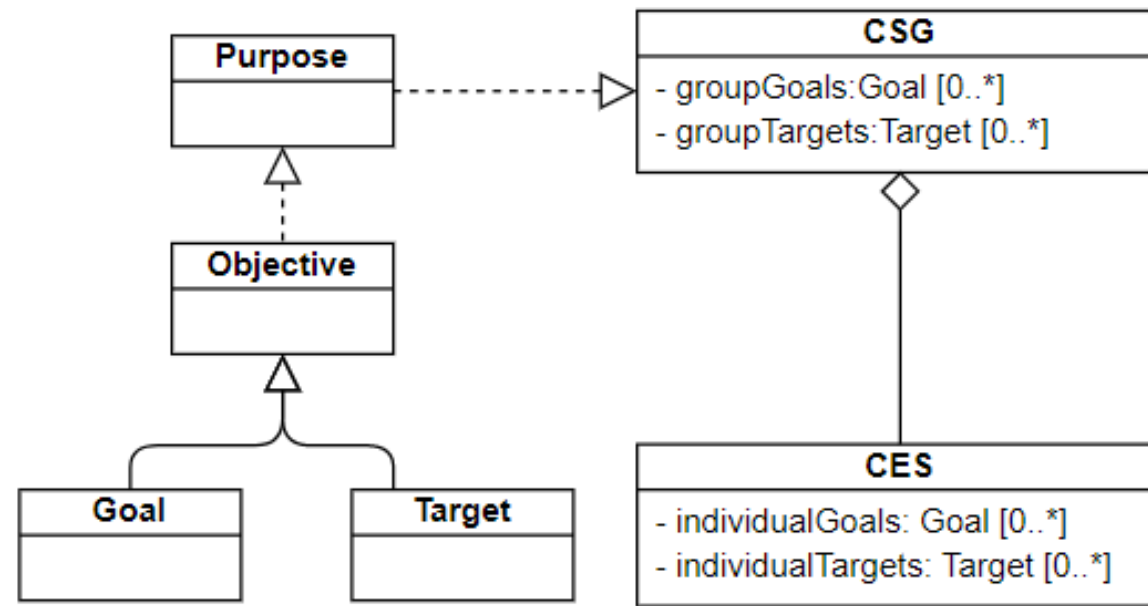
Collaborative Control of Transport Robots

- Challenges
 - Safety-critical (no collisions, no loss of tasks, no deadlocks, ...)
 - Open (new vehicles can join the fleet)
 - Inhomogeneous (not all vehicles completely alike)
- Auction-based coordination
 - Simple bidding: cost function
 - More complex approach: “virtual money”
 - Earn new money by completing a transport job
 - Spend money to buy a new job
- Advantages
 - More flexibility and robustness, higher throughput
 - Better scalability
 - More security



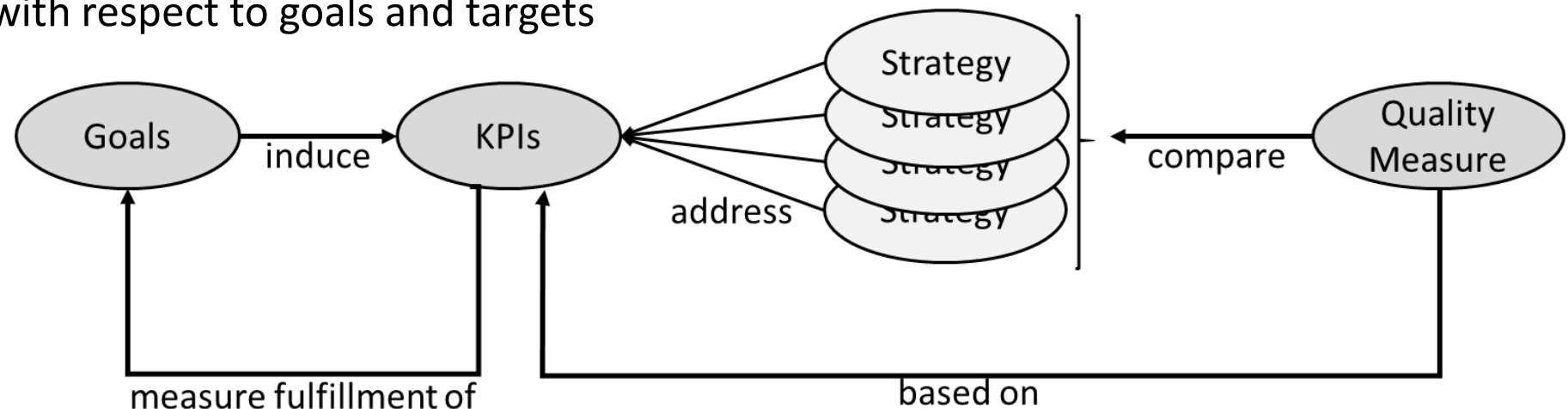
Solution (1)

- Distinguish between *goals* (“hard goals”) and *targets* (“soft goals”)
- A goal is a set of states, a target is a fuzzy set of states
 - both describe what the system should accomplish at runtime
 - a goal shall be reached
 - a target shall be approximated



Solution (2)

- *Key performance indicators* (KPIs) describe the degree of goal fulfillment
- A *strategy* is a function choosing one out of several possible actions, for a certain system and context state
 - The behavior of an autonomous agent is largely determined by its strategy
 - The overall system behavior of a group results from the behavior of its components
- A *quality measure* allows to compare different strategies with respect to goals and targets

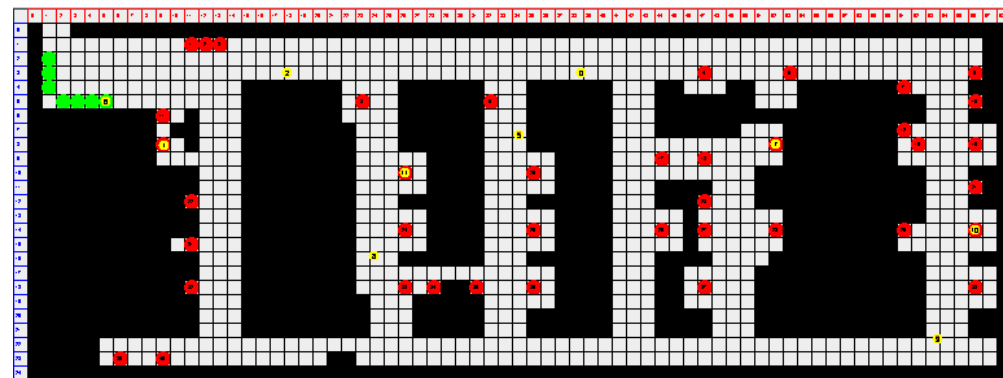
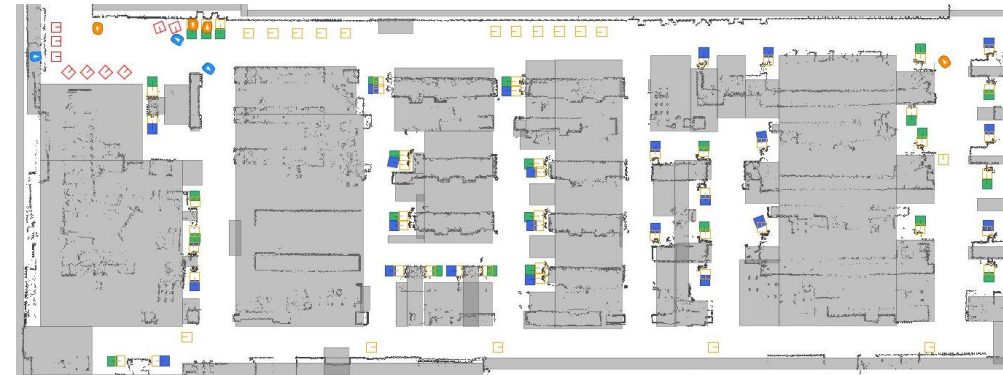


Solution (3)

- Alternating Signal Temporal Logic (ASTL*) for the formalization of KPIs

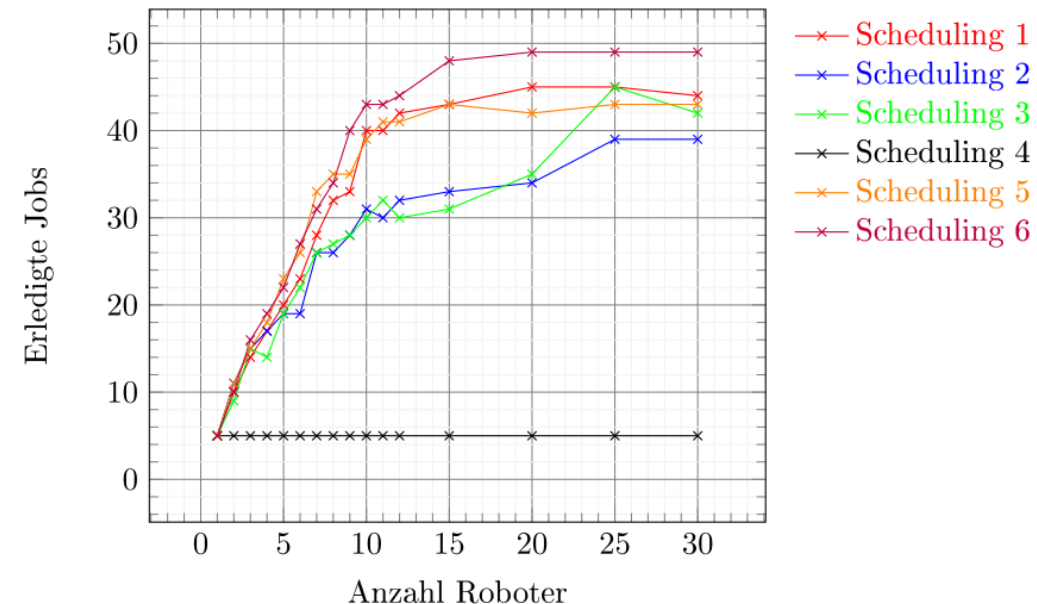
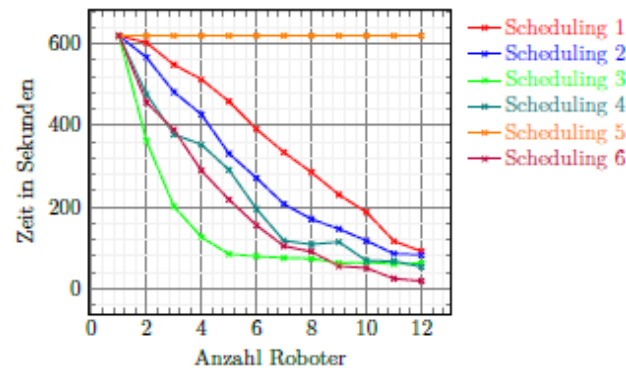
- $\mathbf{G}(Batt.lvl \geq 0.4 \wedge Batt.lvl \leq 0.7)$
- $\langle\langle bid.i.j \rangle\rangle \mathbf{G} \forall k (waitingtime(m_k) \leq 100)$

- Robust semantics reflect the quality measure
- Discrete modelling of scenarios and actions
 - e.g., floor plan, robots, docking stations
 - Auction system for job scheduling
- Using model checkers to generate strategies
- Using simulators to evaluate strategies



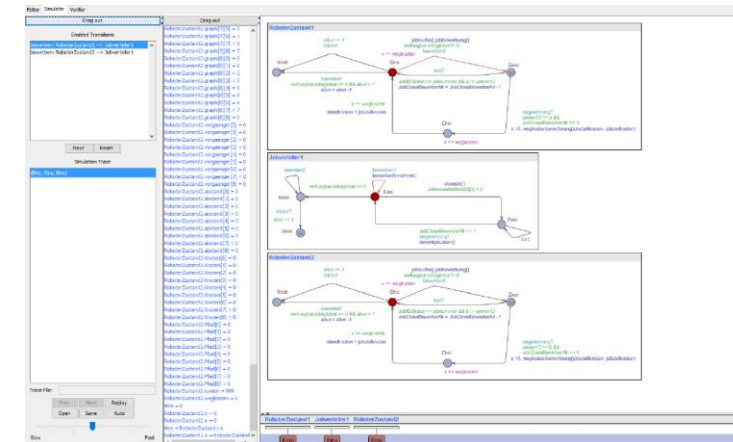
Results (1)

- Simulative evaluation of goal-based strategy development
 - Definition of a quality measure for strategies regarding, e.g., equal wear of tear of robots
 - Simulative comparison of several strategies for transport robots (first-come-first-served, shortest-path, shortest-time, lowest-workload, best-energy, ...)
 - Strategy defined after formal definition of quality measure improved goal fulfillment by nearly 20%



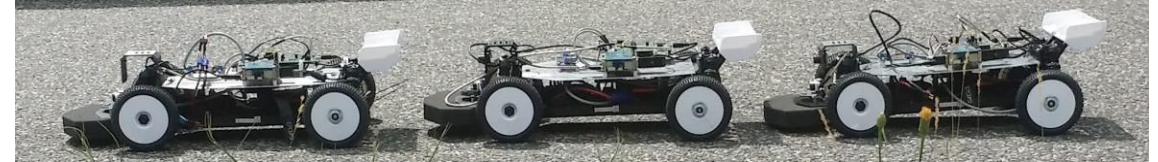
Results (2)

- Different kinds of properties were analyzed
 - Temporal properties, e.g., no deadlocks, safety and liveness, ...
 - Timing properties, e.g., responsiveness, best/worst timing, ...
 - Performance properties, e.g., throughput, utilization rate, ...
 - Fault tolerance properties, e.g., roadblocks, failures, ...
 - Flexibility properties, e.g., additional robots and stations, alternative floor plans, ...
 - Strategic properties, e.g. security, intruders, traitors, goals & strategies, ...
- Model checking approach is subject to state explosion problem
 - Combination with abstraction refinement techniques
 - Combination with machine learning approaches



Success stories

- Car platooning: „Velox“ model cars
 - Educational component
 - Integrating machine learning; safety?
- Transport robot use case
 - First decentralized industrial solution
 - Specification and validation of adaptive goals
 - (Decentralized) monitoring
- New industrial project „Commissioning of parts“
 - Collecting items from a storage
 - Storage goes to commissioner (not vice versa)





*Vielen
Dank!*

Fragen ?